



# AiP74AHC373/AHCT373 Octal D Type Transparent Latch; 3-State

## Product Specification

### Specification Revision History:

Version	Date	Description
2025-06-A0	2025-06	New
2025-08-A1	2025-08	Modify the parameters



# Contents

<b>1、 General Description.....</b>	<b>1</b>
<b>2、 Block Diagram And Pin Description .....</b>	<b>3</b>
2.1、 Block Diagram .....	3
2.2、 Pin Configurations.....	3
2.3、 Pin Description .....	4
2.4、 Function Table.....	4
<b>3、 Electrical Parameter .....</b>	<b>5</b>
3.1、 Absolute Maximum Ratings.....	5
3.2、 Recommended Operating Conditions.....	5
3.3、 Electrical Characteristics .....	6
3.3.1、 DC Characteristics 1 .....	6
3.3.2、 DC Characteristics 2 .....	7
3.3.3、 AC Characteristics 1 .....	8
3.3.4、 AC Characteristics 2 .....	9
<b>4、 Testing Circuit .....</b>	<b>10</b>
4.1、 AC Testing Circuit .....	10
4.2、 Test Data .....	10
4.3、 AC Testing Waveforms.....	11
4.4、 Measurement Points .....	12
<b>5、 Package Information .....</b>	<b>13</b>
5.1、 DIP20 .....	13
5.2、 SOP20 .....	14
5.3、 TSSOP20.....	15
<b>6、 Statements And Notes .....</b>	<b>16</b>
6.1、 The name and content of Hazardous substances or Elements in the product .....	16
6.2、 Notes .....	16



## 1、General Description

The AiP74AHC/AHCT373 is an octal D type transparent latch; 3-state.

### Features:

- Supply voltage range:  
AiP74AHC373: 2.0V to 5.5V  
AiP74AHCT373: 4.5V to 5.5V
- Input levels:  
AiP74AHC373: CMOS level  
AiP74AHCT373: TTL level
- Temperature range: -40°C to +125°C
- Packaging information: DIP20/SOP20/TSSOP20

### Ordering Information:

#### Tube packing specifications:

Part number	Packaging form	Marking code	Tube quantity	Boxed tube quantity	Boxed quantity	Notes
AiP74AHC373DA20.TB	DIP20	74AHC373	18 PCS/tube	40 tube/box	720 PCS/box	Dimensions of plastic enclosure: 26.3mm×6.4mm Pin spacing: 2.54mm
AiP74AHCT373DA20.TB	DIP20	74AHCT373	18 PCS/tube	40 tube/box	720 PCS/box	Dimensions of plastic enclosure: 26.3mm×6.4mm Pin spacing: 2.54mm



## Reel packing specifications:

Part number	Packaging form	Marking code	Reel quantity	Boxed reel quantity	Notes
AiP74AHC373SA20.TR	SOP20	74AHC373	2000PCS/reel	2000PCS/box	Dimensions of plastic enclosure: 12.8mm×7.5mm Pin spacing: 1.27mm
AiP74AHCT373SA20.TR	SOP20	74AHCT373	2000PCS/reel	2000PCS/box	Dimensions of plastic enclosure: 12.8mm×7.5mm Pin spacing: 1.27mm
AiP74AHC373TA20.TR	TSSOP20	74AHC373	4000PCS/reel	8000PCS/box	Dimensions of plastic enclosure: 6.5mm×4.4mm Pin spacing: 0.65mm
AiP74AHCT373TA20.TR	TSSOP20	74AHCT373	4000PCS/reel	8000PCS/box	Dimensions of plastic enclosure: 6.5mm×4.4mm Pin spacing: 0.65mm

Note: If the physical information is inconsistent with the ordering information, please refer to the actual product.



## 2、Block Diagram And Pin Description

### 2.1、Block Diagram

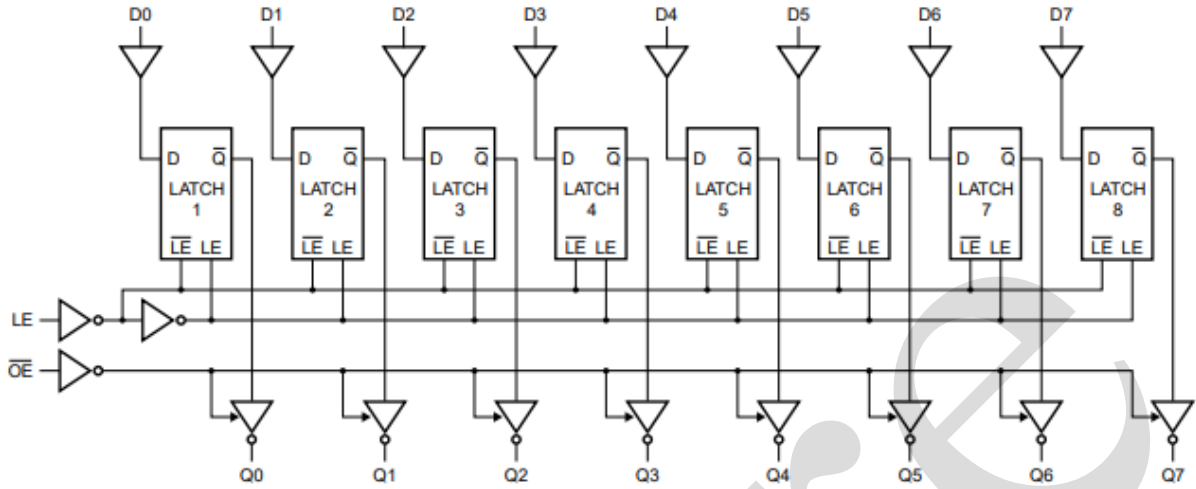
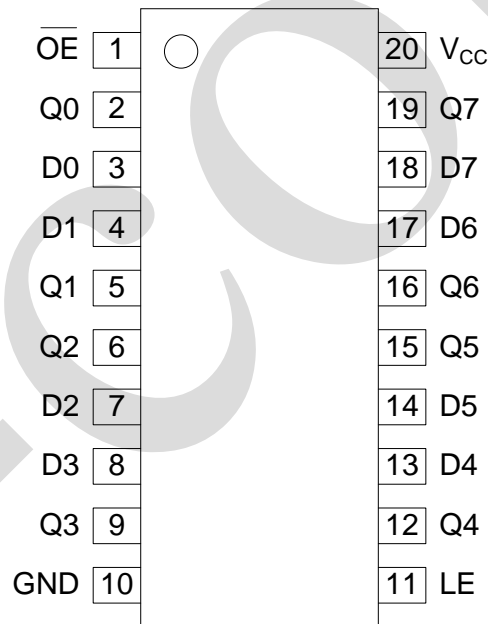


Figure 1. Logic symbol

### 2.2、Pin Configurations





## 2.3、Pin Description

Pin No.	Pin Name	Description
1	$\overline{OE}$	3-state output enable input (active LOW)
2	Q0	3-state latch output
3	D0	data input
4	D1	data input
5	Q1	3-state latch output
6	Q2	3-state latch output
7	D2	data input
8	D3	data input
9	Q3	3-state latch output
10	GND	ground (0 V)
11	LE	latch enable input (active HIGH)
12	Q4	3-state latch output
13	D4	data input
14	D5	data input
15	Q5	3-state latch output
16	Q6	3-state latch output
17	D6	data input
18	D7	data input
19	Q7	3-state latch output
20	V <sub>CC</sub>	supply voltage

## 2.4、Function Table

Operating mode	Control		Input	Internal latch	Output
	$\overline{OE}$	LE	Dn		Q0~Q7
Enable and read register (transparent mode)	L	H	L	L	L
			H	H	H
Latch and read register	L	L	l	L	L
			h	H	H
Latch register and disable outputs	H	X	X	X	Z
			X	X	Z

Note:

H = HIGH voltage level; h = HIGH voltage level one set-up time prior to the HIGH-to-LOW LE transition;  
 L = LOW voltage level; l = LOW voltage level one set-up time prior to the HIGH-to-LOW LE transition;  
 X = don't care; Z = high-impedance OFF-state.



## 3、Electrical Parameter

### 3.1、Absolute Maximum Ratings

(Voltages are referenced to GND (ground=0V), unless otherwise specified.)

Parameter	Symbol	Conditions	Min.	Max.	Unit
supply voltage	$V_{CC}$	-	-0.5	+7	V
supply current	$I_{CC}$	-	-	+75	mA
ground current	$I_{GND}$	-	-75	-	mA
input clamping current	$I_{IK}$	$V_I < -0.5V$	-20	-	mA
output clamping current	$I_{OK}$	$V_O < -0.5V$ or $V_O > V_{CC}+0.5V$	-	$\pm 20$	mA
output current	$I_O$	$-0.5V < V_O < V_{CC}+0.5V$	-	$\pm 25$	mA
storage temperature	$T_{stg}$	-	-65	+150	$^{\circ}C$
soldering temperature	$T_L$	10s	DIP		$^{\circ}C$
			SOP/TSSOP		

### 3.2、Recommended Operating Conditions

Parameter	Symbol	Conditions	Min.	Typ.	Max.	Unit
<b>AiP74AHC373</b>						
supply voltage	$V_{CC}$	-	2.0	5.0	6.0	V
input voltage	$V_I$	-	0	-	5.5	V
output voltage	$V_O$	-	0	-	$V_{CC}$	V
ambient temperature	$T_{amb}$	-	-40	-	+125	$^{\circ}C$
<b>AiP74AHCT373</b>						
supply voltage	$V_{CC}$	-	4.5	5.0	5.5	V
input voltage	$V_I$	-	0	-	5.5	V
output voltage	$V_O$	-	0	-	$V_{CC}$	V
ambient temperature	$T_{amb}$	-	-40	-	+125	$^{\circ}C$



### 3.3、Electrical Characteristics

#### 3.3.1、DC Characteristics 1

(T<sub>amb</sub>=-40°C to +85°C, voltages are referenced to GND (ground=0V), unless otherwise specified.)

Parameter	Symbol	V <sub>CC</sub>	Conditions	Min.	Typ.	Max.	Unit
<b>AiP74AHC373</b>							
HIGH-level input voltage	V <sub>IH</sub>	2.0V	-	1.5	-	-	V
		3.0V	-	2.1	-	-	V
		5.5V	-	3.85	-	-	V
LOW-level input voltage	V <sub>IL</sub>	2.0V	-	-	-	0.5	V
		3.0V	-	-	-	0.9	V
		5.5V	-	-	-	1.65	V
HIGH-level output voltage	V <sub>OH</sub>	2.0V	I <sub>O</sub> =-50uA	1.9	2.0	-	V
		3.0V	I <sub>O</sub> =-50uA	2.9	3.0	-	V
		4.5V	I <sub>O</sub> =-50uA	4.4	4.5	-	V
		3.0V	I <sub>O</sub> =-4.0mA	2.48	-	-	V
		4.5V	I <sub>O</sub> =-8.0mA	3.8	-	-	V
LOW-level output voltage	V <sub>OL</sub>	2.0V	I <sub>O</sub> =50uA	-	0	0.1	V
		3.0V	I <sub>O</sub> =50uA	-	0	0.1	V
		4.5V	I <sub>O</sub> =50uA	-	0	0.1	V
		3.0V	I <sub>O</sub> =4.0mA	-	-	0.44	V
		4.5V	I <sub>O</sub> =8.0mA	-	-	0.44	V
input leakage current	I <sub>I</sub>	0~5.5V	V <sub>I</sub> =5.5V or GND	-	-	±1	uA
OFF-state output current	I <sub>OZ</sub>	5.5V	V <sub>I</sub> =V <sub>IH</sub> or V <sub>IL</sub> ; V <sub>O</sub> =V <sub>CC</sub> or GND	-	-	±2.5	uA
supply current	I <sub>CC</sub>	5.5V	V <sub>I</sub> =V <sub>CC</sub> or GND;I <sub>O</sub> =0A	-	-	40	uA
<b>AiP74AHCT373</b>							
HIGH-level input voltage	V <sub>IH</sub>	4.5~5.5V	-	2.0	-	-	V
LOW-level input voltage	V <sub>IL</sub>	4.5~5.5V	-	-	-	0.8	V
HIGH-level output voltage	V <sub>OH</sub>	4.5V	I <sub>O</sub> =-50uA	4.4	4.5	-	V
			I <sub>O</sub> =-8.0mA	3.8	-	-	V
LOW-level output voltage	V <sub>OL</sub>	4.5V	I <sub>O</sub> =50uA	-	-	0.1	V
			I <sub>O</sub> =8.0mA	-	-	0.44	V
input leakage current	I <sub>I</sub>	0~5.5V	V <sub>I</sub> =V <sub>CC</sub> or GND	-	-	±1	uA
OFF-state output current	I <sub>OZ</sub>	5.5V	V <sub>I</sub> =V <sub>IH</sub> or V <sub>IL</sub> ; V <sub>O</sub> =V <sub>CC</sub> or GND	-	-	±2.5	uA
supply current	I <sub>CC</sub>	5.5V	V <sub>I</sub> =V <sub>CC</sub> or GND;I <sub>O</sub> =0A	-	-	40	uA
additional supply current	ΔI <sub>CC</sub>	4.5~5.5V	One input at 3.4V; Other inputs at V <sub>CC</sub> or GND; I <sub>O</sub> =0A	-	-	1.35	mA



### 3.3.2、DC Characteristics 2

( $T_{amb}=-40^{\circ}\text{C}$  to  $+125^{\circ}\text{C}$ , voltages are referenced to GND (ground=0V), unless otherwise specified.)

Parameter	Symbol	V <sub>CC</sub>	Conditions	Min.	Typ.	Max.	Unit
<b>AiP74AHC373</b>							
HIGH-level input voltage	V <sub>IH</sub>	2.0V	-	1.5	-	-	V
		3.0V	-	2.1	-	-	V
		5.5V	-	3.85	-	-	V
LOW-level input voltage	V <sub>IL</sub>	2.0V	-	-	-	0.5	V
		3.0V	-	-	-	0.9	V
		5.5V	-	-	-	1.65	V
HIGH-level output voltage	V <sub>OH</sub>	2.0V	I <sub>O</sub> =-50uA	1.9	-	-	V
		3.0V	I <sub>O</sub> =-50uA	2.9	-	-	V
		4.5V	I <sub>O</sub> =-50uA	4.4	-	-	V
		3.0V	I <sub>O</sub> =-4.0mA	2.4	-	-	V
		4.5V	I <sub>O</sub> =-8.0mA	3.7	-	-	V
LOW-level output voltage	V <sub>OL</sub>	2.0V	I <sub>O</sub> =50uA	-	-	0.1	V
		3.0V	I <sub>O</sub> =50uA	-	-	0.1	V
		4.5V	I <sub>O</sub> =50uA	-	-	0.1	V
		3.0V	I <sub>O</sub> =4.0mA	-	-	0.55	V
		4.5V	I <sub>O</sub> =8.0mA	-	-	0.55	V
input leakage current	I <sub>I</sub>	0~5.5V	V <sub>I</sub> =5.5V or GND	-	-	±2	uA
OFF-state output current	I <sub>OZ</sub>	5.5V	V <sub>I</sub> =V <sub>IH</sub> or V <sub>IL</sub> ; V <sub>O</sub> =V <sub>CC</sub> or GND	-	-	±10	uA
supply current	I <sub>CC</sub>	5.5V	V <sub>I</sub> =V <sub>CC</sub> or GND;I <sub>O</sub> =0A	-	-	80	uA
<b>AiP74AHCT373</b>							
HIGH-level input voltage	V <sub>IH</sub>	4.5~5.5V	-	2.0	-	-	V
LOW-level input voltage	V <sub>IL</sub>	4.5~5.5V	-	-	-	0.8	V
HIGH-level output voltage	V <sub>OH</sub>	4.5V	I <sub>O</sub> =-50uA	4.4	-	-	V
			I <sub>O</sub> =-8.0mA	3.7	-	-	V
LOW-level output voltage	V <sub>OL</sub>	4.5V	I <sub>O</sub> =50uA	-	-	0.1	V
			I <sub>O</sub> =8.0mA	-	-	0.55	V
input leakage current	I <sub>I</sub>	0~5.5V	V <sub>I</sub> =V <sub>CC</sub> or GND	-	-	±2	uA
OFF-state output current	I <sub>OZ</sub>	5.5V	V <sub>I</sub> =V <sub>IH</sub> or V <sub>IL</sub> ; V <sub>O</sub> =V <sub>CC</sub> or GND	-	-	±10	uA
supply current	I <sub>CC</sub>	5.5V	V <sub>I</sub> =V <sub>CC</sub> or GND;I <sub>O</sub> =0A	-	-	80	uA
additional supply current	ΔI <sub>CC</sub>	4.5~5.5V	One input at 3.4V; Other inputs at V <sub>CC</sub> or GND; I <sub>O</sub> =0A	-	-	1.5	mA



### 3.3.3、AC Characteristics 1

( $T_{amb} = -40^{\circ}\text{C}$  to  $+85^{\circ}\text{C}$ , voltages are referenced to GND (ground=0V), unless otherwise specified.)

Parameter	Symbol	V <sub>CC</sub>	Conditions	Min.	Typ.	Max.	Unit	
<b>AiP74AHC373</b>								
Dn to Qn propagation delay	$t_{PLH}, t_{PHL}$	3.0~3.6V	$C_L=15\text{pF}$	see Figure 3	1.0	6.0	13.5	ns
			$C_L=50\text{pF}$		1.0	7.8	17.0	ns
		4.5~5.5V	$C_L=15\text{pF}$		1.0	4.0	8.5	ns
			$C_L=50\text{pF}$		1.0	5.3	10.5	ns
LE to Qn propagation delay	$t_{PLH}, t_{PHL}$	3.0~3.6V	$C_L=15\text{pF}$	see Figure 4	1.0	6.3	13.0	ns
			$C_L=50\text{pF}$		1.0	8.3	16.5	ns
		4.5~5.5V	$C_L=15\text{pF}$		1.0	4.3	8.5	ns
			$C_L=50\text{pF}$		1.0	5.6	11.1	ns
$\overline{\text{OE}}$ to Qn enable time	ten	3.0~3.6V	$C_L=15\text{pF}$	see Figure 5	1.0	5.6	13.5	ns
			$C_L=50\text{pF}$		1.0	7.5	17.0	ns
		4.5~5.5V	$C_L=15\text{pF}$		1.0	3.8	9.5	ns
			$C_L=50\text{pF}$		1.0	5.2	11.5	ns
$\overline{\text{OE}}$ to Qn disable time	tdis	3.0~3.6V	$C_L=15\text{pF}$	see Figure 5	1.0	5.6	12.0	ns
			$C_L=50\text{pF}$		1.0	9.2	15.0	ns
		4.5~5.5V	$C_L=15\text{pF}$		1.0	4.3	8.5	ns
			$C_L=50\text{pF}$		1.0	6.4	10.5	ns
pulse width LE high or low	tw	3.0~3.6V	-	see Figure 4	5.0	-	-	ns
		4.5~5.5V	-		5.0	-	-	ns
Dn to LE set-up time	tsu	3.0~3.6V	-	see Figure 6	4.0	-	-	ns
		4.5~5.5V	-		4.0	-	-	ns
Dn to LE hold time	th	3.0~3.6V	-	see Figure 6	1.0	-	-	ns
		4.5~5.5V	-		1.0	-	-	ns
<b>AiP74AHCT373</b>								
Dn to Qn propagation delay	$t_{PLH}, t_{PHL}$	4.5~5.5V	$C_L=15\text{pF}$	see Figure 3	1.0	4.0	9.5	ns
			$C_L=50\text{pF}$		1.0	5.2	10.5	ns
LE to Qn propagation delay	$t_{PLH}, t_{PHL}$	4.5~5.5V	$C_L=15\text{pF}$	see Figure 4	1.0	4.3	13.5	ns
			$C_L=50\text{pF}$		1.0	5.5	14.5	ns
$\overline{\text{OE}}$ to Qn enable time	ten	4.5~5.5V	$C_L=15\text{pF}$	see Figure 5	1.0	4.0	12.5	ns
			$C_L=50\text{pF}$		1.0	5.2	13.5	ns
$\overline{\text{OE}}$ to Qn disable time	tdis	4.5~5.5V	$C_L=50\text{pF}$	see Figure 5	1.0	4.4	11.0	ns
			$C_L=15\text{pF}$		1.0	6.5	12.0	ns
pulse width LE high or low	tw	4.5~5.5V	-	see Figure 4	6.5	-	-	ns
Dn to LE set-up time	tsu	4.5~5.5V	-	see Figure 6	3.5	-	-	ns
Dn to LE hold time	th	4.5~5.5V	-		1.5	-	-	ns



### 3.3.4、AC Characteristics 2

(T<sub>amb</sub>=-40°C to +125°C, voltages are referenced to GND (ground=0V), unless otherwise specified.)

Parameter	Symbol	V <sub>CC</sub>	Conditions	Min.	Typ.	Max.	Unit	
<b>AiP74AHC373</b>								
Dn to Qn propagation delay	t <sub>PLH</sub> , t <sub>PHL</sub>	3.0~3.6V	C <sub>L</sub> =15pF	see Figure 3	-	-	14.5	ns
			C <sub>L</sub> =50pF		-	-	19.0	ns
		4.5~5.5V	C <sub>L</sub> =15pF		-	-	9.0	ns
			C <sub>L</sub> =50pF		-	-	11.5	ns
LE to Qn propagation delay	t <sub>PLH</sub> , t <sub>PHL</sub>	3.0~3.6V	C <sub>L</sub> =15pF	see Figure 4			14.0	ns
			C <sub>L</sub> =50pF				18.5	ns
		4.5~5.5V	C <sub>L</sub> =15pF				9.0	ns
			C <sub>L</sub> =50pF				12.5	ns
LE to Qn propagation delay	t <sub>en</sub>	3.0~3.6V	C <sub>L</sub> =15pF	see Figure 5	-	-	14.5	ns
			C <sub>L</sub> =50pF		-	-	19.0	ns
		4.5~5.5V	C <sub>L</sub> =15pF		-	-	10.5	ns
			C <sub>L</sub> =50pF		-	-	13.0	ns
OE to Qn enable time	t <sub>dis</sub>	3.0~3.6V	C <sub>L</sub> =15pF	see Figure 5	-	-	13.0	ns
			C <sub>L</sub> =50pF		-	-	17.0	ns
		4.5~5.5V	C <sub>L</sub> =15pF		-	-	9.5	ns
			C <sub>L</sub> =50pF		-	-	11.5	ns
pulse width LE high or low	t <sub>w</sub>	3.0~3.6V	-	see Figure 4	5.0	-	-	ns
		4.5~5.5V	-		5.0	-	-	ns
Dn to LE set-up time	t <sub>su</sub>	3.0~3.6V	-	see Figure 6	4.0	-	-	ns
		4.5~5.5V	-		4.0	-	-	ns
Dn to LE hold time	t <sub>h</sub>	3.0~3.6V	-	see Figure 6	1.0	-	-	ns
		4.5~5.5V	-		1.0	-	-	ns
<b>AiP74AHCT373</b>								
Dn to Qn propagation delay	t <sub>PLH</sub> , t <sub>PHL</sub>	4.5~5.5V	C <sub>L</sub> =15pF	see Figure 3	-	-	11.0	ns
			C <sub>L</sub> =50pF		-	-	12.0	ns
LE to Qn propagation delay	t <sub>PLH</sub> , t <sub>PHL</sub>	4.5~5.5V	C <sub>L</sub> =15pF	see Figure 4	-	-	15.5	ns
			C <sub>L</sub> =50pF		-	-	17.0	ns
OE to Qn enable time	t <sub>en</sub>	4.5~5.5V	C <sub>L</sub> =15pF	see Figure 5			14.0	ns
			C <sub>L</sub> =50pF				15.0	ns
OE to Qn disable time	t <sub>dis</sub>	4.5~5.5V	C <sub>L</sub> =50pF	see Figure 5	-	-	13.0	ns
			C <sub>L</sub> =15pF		-	-	14.0	ns
pulse width LE high or low	t <sub>w</sub>	4.5~5.5V	-	see Figure 4	6.5	-	-	ns
Dn to LE set-up time	t <sub>su</sub>	4.5~5.5V	-	see Figure 6	3.5	-	-	ns
Dn to LE hold time	t <sub>h</sub>	4.5~5.5V	-		1.5	-	-	ns



## 4、Testing Circuit

### 4.1、AC Testing Circuit

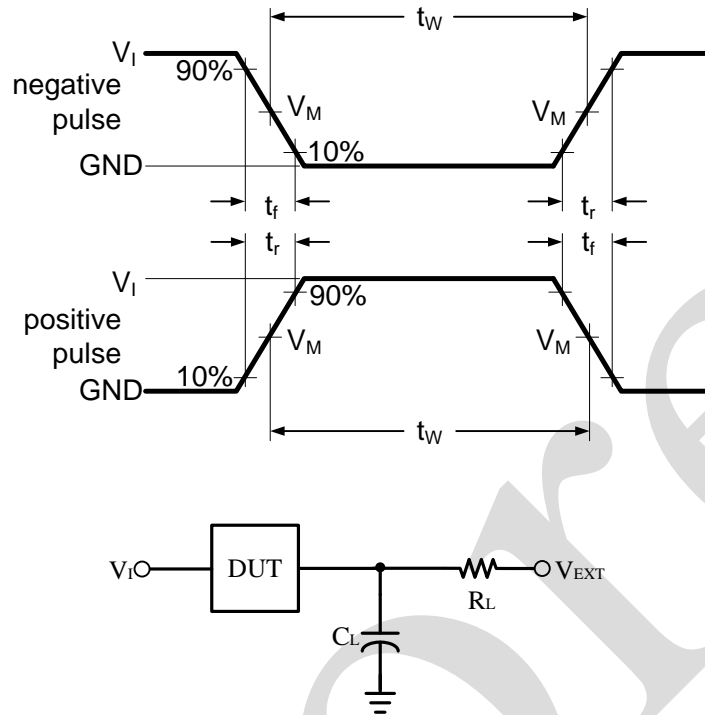


Figure 2. Test circuit for measuring switching times

$C_L$  includes probe and jig capacitance.

### 4.2、Test Data

Type	Input		Load		$V_{EXT}$		
	$V_I$	$t_r = t_f$	$C_L$	$R_L$	$t_{PLH}/t_{PHL}$	$t_{PLZ}/t_{PZL}$	$t_{PHZ}/t_{PZH}$
AiP74AHC373	$V_{CC}$	3.0ns	15pF, 50pF	1K $\Omega$	Open	$V_{CC}$	GND
AiP74AHCT373	3.0V	3.0ns	15pF, 50pF	1K $\Omega$	Open	$V_{CC}$	GND



4.3、AC Testing Waveforms

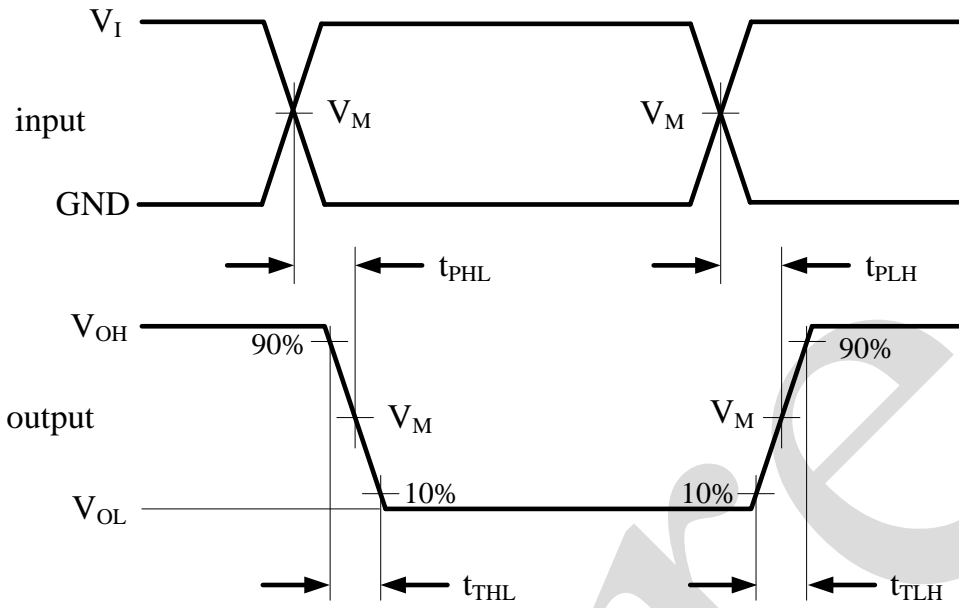


Figure 3. Propagation delay, output transition time

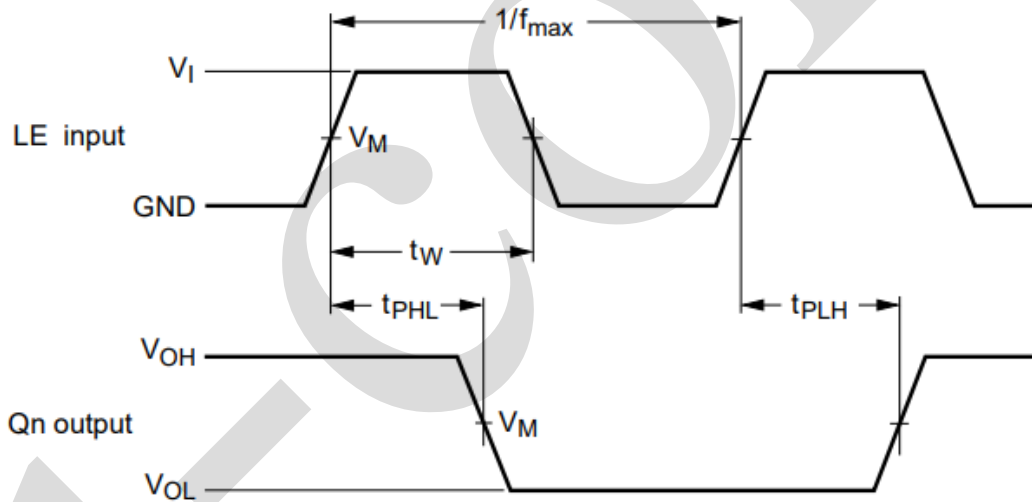


Figure 4. Latch enable pulse width and input to output propagation delays

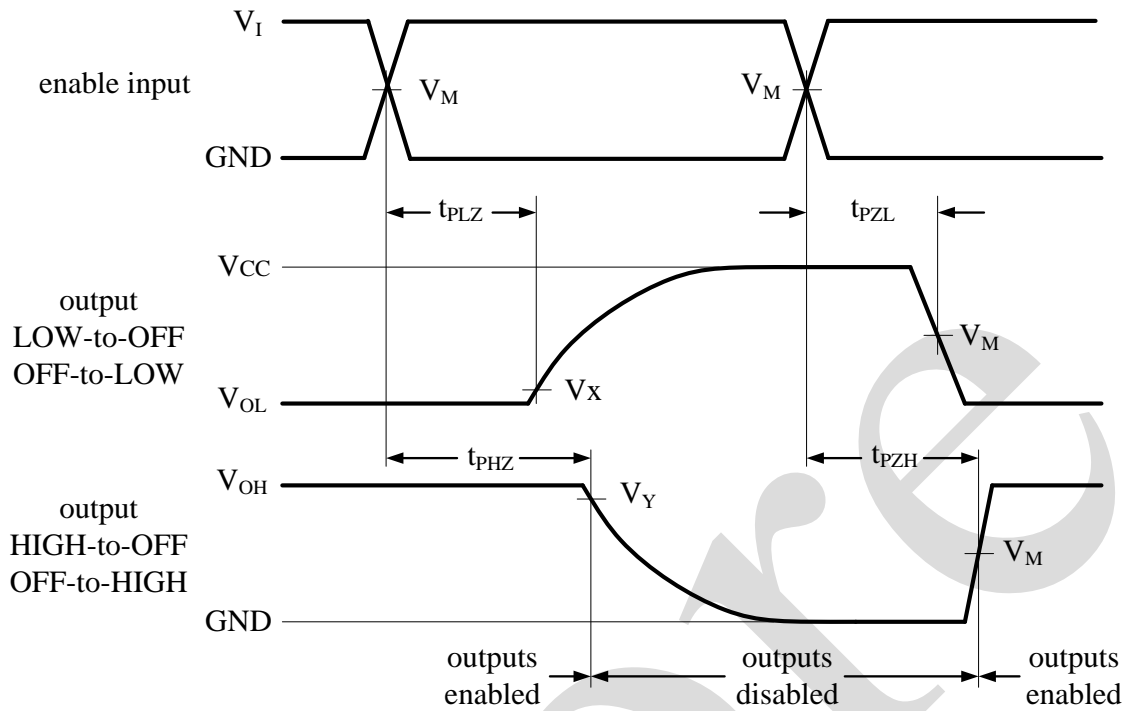


Figure 5. 3-state enable and disable times

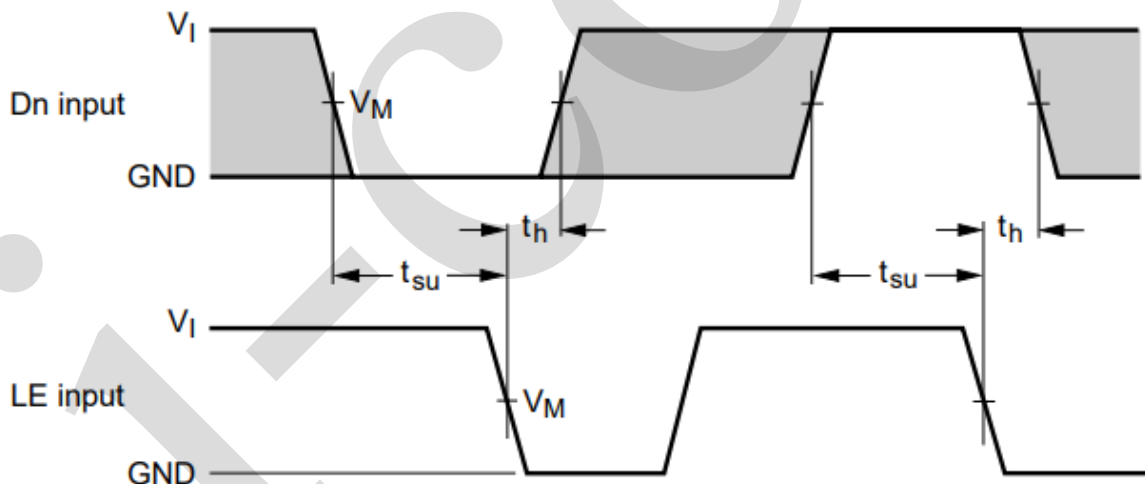


Figure 6. Data set-up and hold times

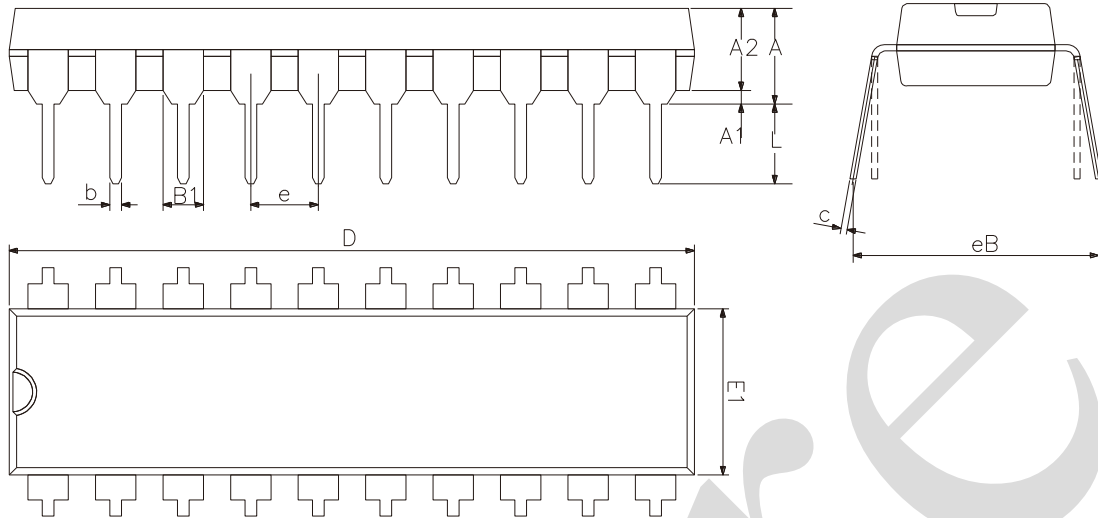
#### 4.4. Measurement Points

Type	Input	Output		
	$V_M$	$V_M$	$V_X$	$V_Y$
AiP74AHC373	$0.5 \times V_{CC}$	$0.5 \times V_{CC}$	$V_{OL} + 0.3V$	$V_{OH} - 0.3V$
AiP74AHCT373	1.5V	$0.5 \times V_{CC}$	$V_{OL} + 0.3V$	$V_{OH} - 0.3V$



## 5、Package Information

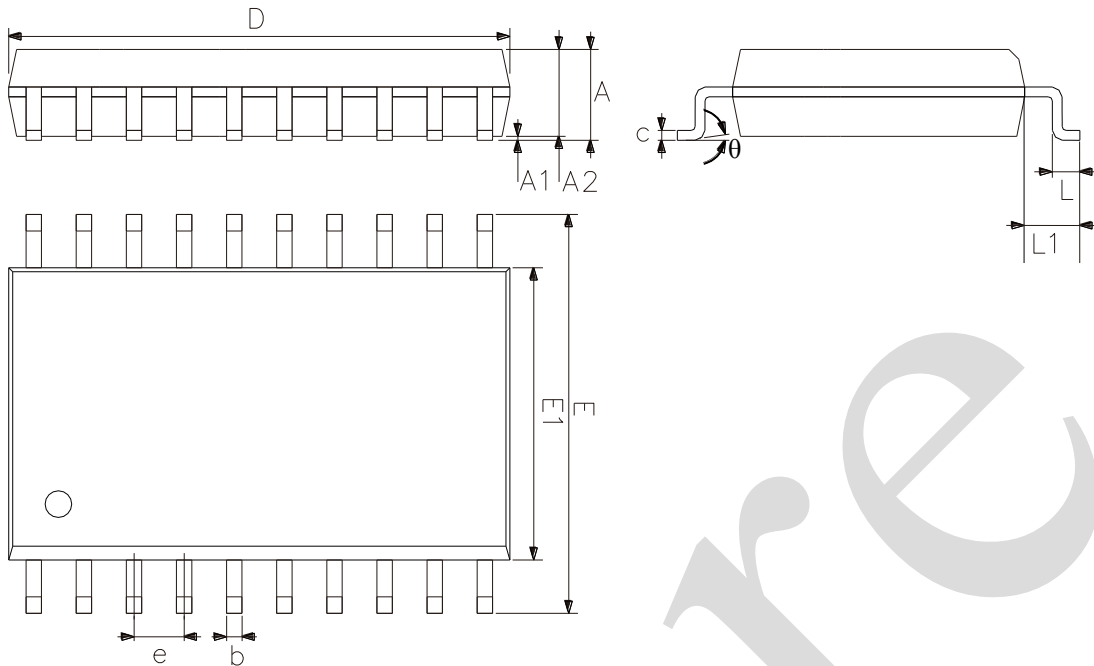
### 5.1、DIP20



2023/12/A	Dimensions In Millimeters		
	Symbol	Min	Max
	A	3.60	5.33
	A1	0.51	—
	A2	3.20	3.60
	b	0.36	0.53
	B1	1.52	
	c	0.204	0.36
	D	25.70	26.54
	E1	6.20	6.75
	e	2.54	
	eB	7.62	9.30
	L	3.00	3.60



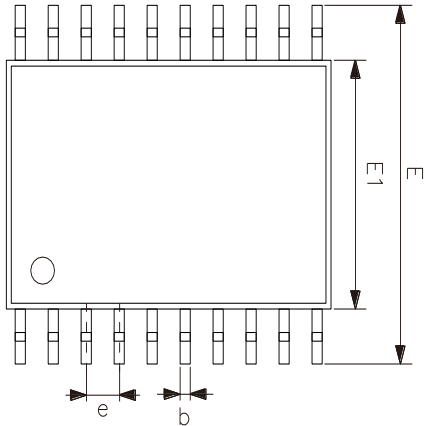
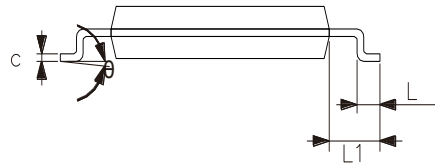
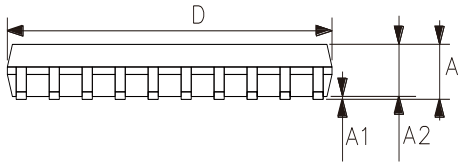
## 5.2、SOP20



2023/12/A	Dimensions In Millimeters	
Symbol	Min.	Max.
A	2.47	2.65
A1	0.05	0.30
A2	2.20	2.44
b	0.35	0.50
c	0.15	0.30
D	12.54	12.94
E	10.00	10.60
E1	7.30	7.70
e	1.27	
L	0.40	1.05
L1	1.30	1.50
$\theta$	0°	8°



## 5.3、TSSOP20



2023/12/A	Dimensions In Millimeters	
Symbol	Min	Max
A	—	1.20
A1	0.05	0.15
A2	0.80	1.05
b	0.19	0.30
c	0.09	0.20
D	6.40	6.60
E1	4.30	4.50
E	6.20	6.60
e	0.65	
L	0.45	0.75
L1	1.00	
$\theta$	0°	8°



## 6、 Statements And Notes

### 6.1、 The name and content of Hazardous substances or Elements in the product

Part name	Hazardous substances or Elements									
	Lead and lead compounds	Mercury and mercury compounds	Cadmium and cadmium compounds	Hexavalent chromium compounds	Polybrominated biphenyls	Polybrominated biphenyl ethers	Dibutyl phthalate	Butylbenzyl phthalate	Di-2-ethylhexyl phthalate	Diisobutyl phthalate
Lead frame	○	○	○	○	○	○	○	○	○	○
Plastic resin	○	○	○	○	○	○	○	○	○	○
Chip	○	○	○	○	○	○	○	○	○	○
The lead	○	○	○	○	○	○	○	○	○	○
Plastic sheet installed	○	○	○	○	○	○	○	○	○	○
explanation	○: Indicates that the content of hazardous substances or elements in the detection limit of the following the SJ/T11363-2006 standard. ×: Indicates that the content of hazardous substances or elements exceeding the SJ/T11363-2006 Standard limit requirements.									

### 6.2、 Notes

We recommend you to read this chapter carefully before using this product.

The information in this chapter is provided for reference only and i-Core disclaims any express or implied warranties, including but not limited to applicability, special application or non-infringement of third party rights.

This product is not suitable for critical equipment such as life-saving, life-sustaining or safety equipment. It is also not suitable for applications that may result in personal injury, death, or serious property or environmental damage due to product malfunction or failure. I-Core will not be liable for any damages incurred by the customers at their own risk for such applications.

The customer is responsible for conducting all necessary tests i-Core's application to avoid failure in the application or the application of the customer's third party users. I-Core does not accept any liability.

The Company reserves the right to change or improve the information published in this chapter at any time. The information in this chapter are subject to change without notice. We recommend the customer to consult our sales staff before purchasing.

Please obtain related materials form i-Core's regular channels and we are not responsible for its content if it is provided by sources other than our company.

In case of any conflict between the Chinese and English version, the version is subject to the Chinese one.